



LALEHAM LEA

Catholic Independent Primary School for boys and girls aged 3-11 years
29 Peaks Hill, Purley, CR8 3JJ. 0208 660 3351
www.lalehamlea.co.uk email: secretary@lalehamlea.co.uk

Friday June 25th 2021

Dear Parents

Thank you for attending our Virtual PTA meeting this week with our Staff as we now relaunch our PTA and plan forwards for the next Academic year.

Our 'Fun Fridays' continued today with summer outfits which brought much cheer to Laleham Lea this morning. This was particularly evident against the backdrop of a very gloomy sky.

Our last 'Fun Friday' takes place next week with 'Silly Sunglasses' with ice cream at the end of the day.

Our 'By the Beach' scene is being dismantled; thank you for bringing along seaside items which are now ready for collection at the front of the school.

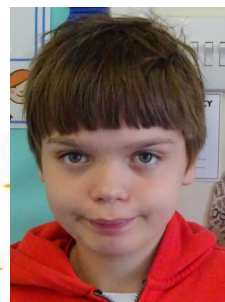
Although we only have two weeks left of this academic year, we are still hosting tours for prospective parents and we have more to enjoy before we break on July 9th.

Wishing us all a lovely weekend.

Ms Barry

Head teacher

Stars of the week





Summer Outfits







Year 2

In Science Year 2 did a comparative test. They planted sunflower seeds and decided on appropriate

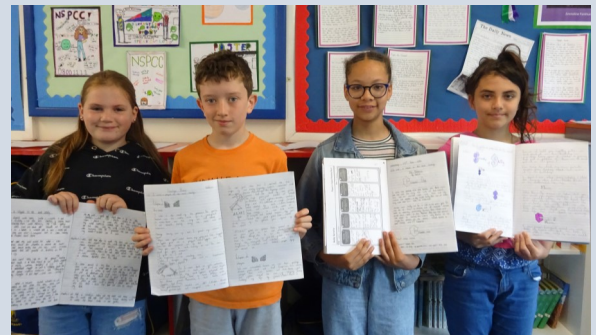
locations and conditions for each plant.



The children made predictions which of the plants will grow well and which will not.

Year 6

It has been a busy week in Year 6! Our English focus this week has been an extended piece of writing based on our class novel 'Skellig'. They have written either a prequel or a sequel to the story and their ideas have been so imaginative.



Reception

This week Reception Class made their own crosses and wrote their own prayers on them. They also made a little prayer area in the classroom .

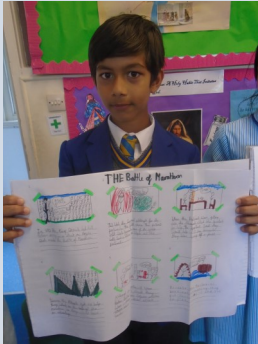
As part of their mini-beasts topic, the class made mixed media spiders in their webs.



Year 4

In History this week Year 4 looked at the stark contrasts between City-states Athens and Sparta.

They studied the battle of Marathon in 490BC and created a story board on the victory of the Athenians against Persian Invasion. The illustrations were fantastic!



Year 1

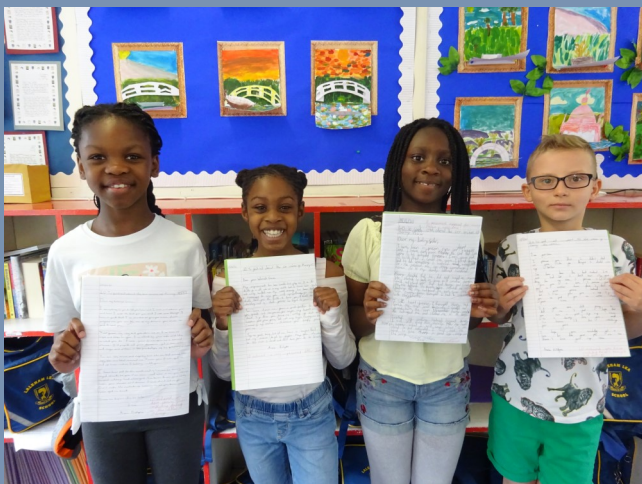
Year 1 explored the theme of the Seaside in depth by taking a trip to our very own Seaside Scene in front of our School.

Children explored the Punch and Judy show, the rock pool, the sand and seashells. They took the opportunity to discuss the geographical features of a sea-side like a promenade, a pier, the sea and shingle. We revisited our knowledge about seaside activities that took place 100 years ago like giant dominoes and shows.



Year 5

Year 5 wrote some fabulous letters from Anne Boleyn on the eve of her execution. This week.



Nursery News

This week Nursery have been looking at the topic Jungle Animals. The children enjoyed participating in a range of activities to develop their knowledge including:

- Playing the 'Guess Who' game, encouraging questioning, reinforcing turn taking and introducing new vocabulary to describe Jungle animals.
- Completing the jungle animal size ordering, introduce and reinforcing language of size. E.g.; 'big, small, bigger, smaller'. For differentiated work, some children were encouraged to complete complicated puzzles.
- Using the jungle pictures provided a variety of paint to create our own Jungle scene.
- We also listened to the story Ronald the Rhino, discussed the structure of the story and thought about alternative endings.



Year 3

Year 3 created their own 'Starry Nights' inspired by Van Gogh in Art this week

Staff Contact Details

nurseryteacher@lalehamlea.co.uk

receptionteacher@lalehamlea.co.uk

lowertransteacher@lalehamlea.co.uk for Y1

uppertransteacher@lalehamlea.co.uk for Y2

prepreteacher@lalehamlea.co.uk for Y3

lowerteacher@lalehamlea.co.uk for Y4

deputyhead@lalehamlea.co.uk for Y5

cting@lalehamlea.co.uk for Y6

vicentefuentes@lalehamlea.co.uk for Spanish

musicteacher@lalehamlea.co.uk for Music

artteacher@lalehamlea.co.uk for Art

All requests for absence must be sent to the Head teacher.

To contact the Head teacher please email directly to headteacher@lalehamlea.co.uk, call 0208 660 3351 (Option 3) or call the school mobile

To contact our School Business Manager, Mrs Strachan, please do so directly by email to sbm@lalehamlea.co.uk call 0208 660 3351 (Option 4) or call the school mobile.

Contact the School Office on: 0208 660 3351 (Option 2) or email secretary@lalehamlea.co.uk